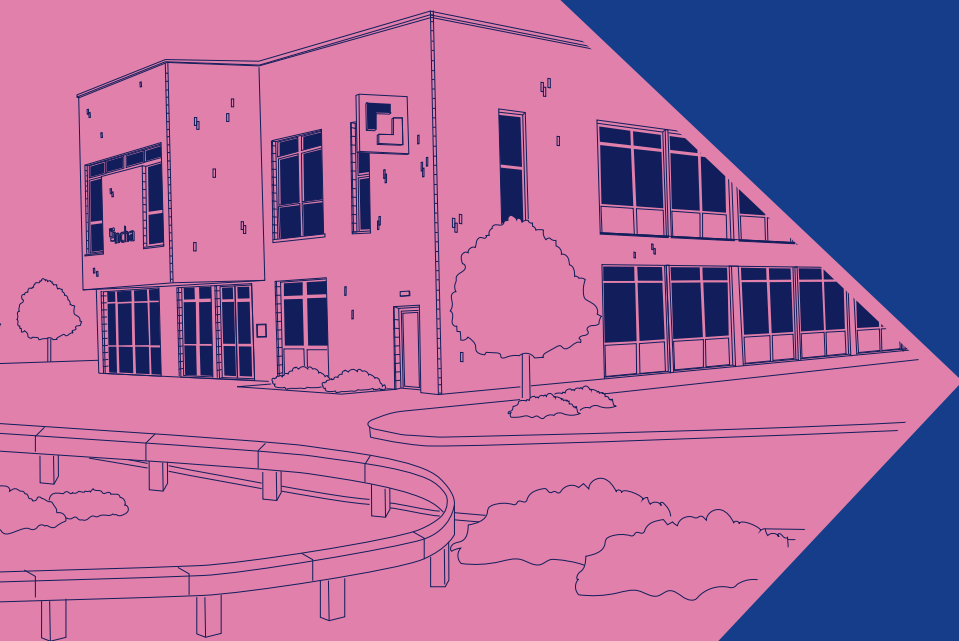


# ncha

# NCHA Board and Executive Team Salary and Pension

Nottingham Community  
Housing Association Limited



for the year ended 31 March 2024

## Board and Executive Team emoluments

Group	2024	2023
The aggregate emoluments paid to or received by Board Members	114	106
The aggregate emoluments paid to or receivable by Executive team members (key management personnel) as listed on page six	684	648
The emoluments paid to the highest paid Executive team member of the Association: Chief Executive excluding pension contributions	180	171
The aggregate amount of Executive team members pensions	59	56
<b>Total</b>	<b>1,037</b>	<b>981</b>

Board Members	2024			2023
	Salary	Pension	Emoluments	Emoluments
	£	£	£	£
Callum Gillespie (NCHA Chair)	15,726	-	15,726	12,753
Claire Winfield (NCHA Chair - Part Year 2023)	-	-	-	6,143
Andrew Kilby (NCHA Audit Committee Chair)	10,136	-	10,136	8,228
David Harrison	10,136	-	10,136	9,628
Christopher Blackburn	3,277	-	3,277	6,224
Donna Edwards	3,277	-	3,277	6,224
Michael Finister-Smith	6,553	-	6,553	6,224
Lorelei Jarvis	6,553	-	6,553	6,224
Pradeep Khuti	3,277	-	3,277	6,224
Paul Parkinson	6,553	-	6,553	6,224
Mohammed Habib	6,553	-	6,553	6,224
Leanne Monger	6,553	-	6,553	6,224
Gillian Callingham	6,553	-	6,553	4,179
Janet Glass	3,811	-	3,811	-
Sarah Battershall	3,811	-	3,811	-
Natalie Robinson	5,051	-	5,051	-
<b>Total</b>	<b>97,820</b>	<b>-</b>	<b>97,820</b>	<b>90,723</b>

The pension payments on behalf of the Executive team members exclude the SHPS Closed Scheme Surcharge and the SHPS annual deficit contribution.

The Chief Executive is an ordinary member of the Social Housing Pension Scheme. The cost to the Association for the year was £16,300 (2022 - £9,597). No enhancements or special terms apply, nor does the Association make any other pension contributions on his behalf

## Aggregate number of full-time equivalent staff whose remuneration exceeded £60,000 in the period excluding pension:

Salary band	Group	
	2024	2023
	No.	No.
£60,001 to £70,000	5	5
£70,001 to £80,000	4	3
£80,001 to £90,000	6	5
£90,001 to £130,000	-	-
£130,001 to £140,000	-	1
£140,001 to £150,000	3	2
£150,001 to £160,000	-	-
£160,001 to £170,000	-	-
£170,001 to £180,000	-	1
£180,001 to £190,000	1	-
<b>Total</b>	<b>19</b>	<b>17</b>

The remuneration of the highest paid director and the aggregate amount of remuneration paid to all Directors in 2023/24, relative to the size of NCHA, were £17.51 per unit and £76.78 per unit respectively. The total management cost relative to the size of NCHA was £1,143 per unit.

- 
-  0800 013 8555
  -  [www.ncha.org.uk](http://www.ncha.org.uk)
  -  [info@ncha.org.uk](mailto:info@ncha.org.uk)

 /NottinghamCommunityHousingAssociation

An electronic version of this report can be found on our website, [www.ncha.org.uk](http://www.ncha.org.uk)

Nottingham Community Housing Association Limited is a charitable community benefit society, registered with the Financial Conduct Authority under number 7104.

Published September 2024